

How to travel to Wat Trivisudhidham by public van

(Revised Edition, May 2016)

The journey starts from the 'Victory Monument' where the hub for the van is situated (see Figure 1).



Figure 1: Victory Monument (*left image*) and Express Highways cut across and behind the Victory Monument (*right image*)

Walk to the direction where you can see the express highways cut across & behind the Victory monument (see Figure 1). Just before reaching the express highways you will find the building with a big screen TV and a small canal right next to it (see Figure 2).

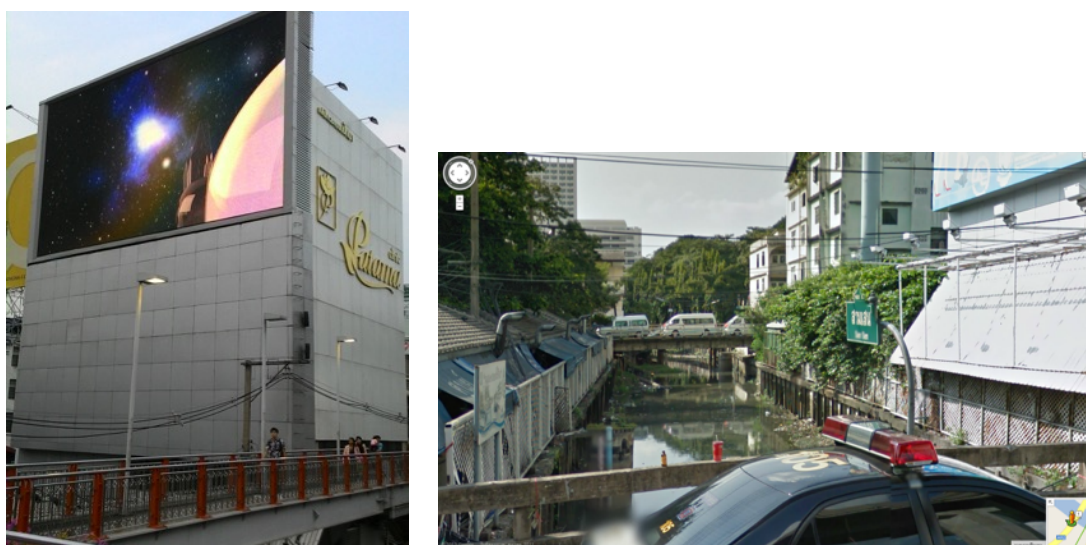


Figure 2: Building with Big screen TV (*left image*) and a small canal (*right image*)

From the canal, walk straight to the direction of the express highways (if you turn your back to the Victory Monument, the van hub would be on your left).

Under the express Highways, you will find many stores (see Figure 3).



Figure 3: Under the express highways

Turn left and look for the ticket booth number 69 on your left (see Figure 4).



Figure 4: Ticket booth

<1 person> Tell the ticket seller that you would like to get off at 'Yak Tarlay Bouk' (about 2.5 kilometres from Wat Trivisudhidham) and pay 160 Baht. Keep the ticket as proof of purchase and you can sit at the waiting area behind the ticket booth (See Figure 5). When the departure time is approaching, the ticket seller or a van driver will inform passengers to walk to the van (the van usually departs every half an hour). (See Figure 5)

<Group of 2 people or more> The van can drop you off at Wat Trivisudhidham if there are 2 people or more going there. Tell the ticket seller that you would like to get off at 'Wat Trivisudhidham' (200 Baht/ person).



Figure 5: Waiting area, passengers walking to the van, and the van number 69

On the way to the temple, the van will take a quick pit stop at the petrol station and you should have a few minutes to visit the toilet. (see Figure 6)



Figure 6 : Quick pit stop allows you to visit the toilet.

After around two hours, you should see 'Don Jedi Monument ' on your right hand side as a marking point (see Figure 7). *<1 person>* You should remind the van driver that you would like to get off at 'Yak Tarlay Bouk'. *<Group of 2 people or more>* Do nothing. The van will continues for another 10 minutes before reaching 'Yak Tarlay Bouk'.



Figure 7: Entrance to 'Don Jedi Monument'

<1 person> Once you get off, you should see a small green shelter (see Figure 8). Next to it, you should find a small local petrol station (see Figure 8). Just walk into the house within the station and ask if anyone can give you a bike ride to Wat Trivisudhidham. The journey should take around 5 minutes. The cost of the bike ride is 40 Baht per person.

www.วัดตรีวิสุทธิธรรม.com Facebook: [ทีม PR วัดตรีวิสุทธิธรรม](#) | www.visudhidham.com Facebook: [Wat Trivisudhidham](#)

<Group of 2 people or more> Don't get off the van at 'Yak Tarlay Bouk'.



Figure 8 : Small green shelter and small local petrol station

Once you see the blue roof from distance, it means you have finally reached the temple (see Figure 9).



Figure 9: Wat Trivisudhidham

Summary of the journey

Duration: 2:00 - 2:30 hours from the Victory Monument

Cost : 200 Baht

Van frequency: Every 30 minutes between about 5:20 a.m. to 7 p.m.

Temple address: Wat Trivisudhidham, 171 Moo 1, Sa Krachom, Don Chedi, Suphan Buri,
72250 Thailand

Key cards 'How to get to Wat Trivisudhidham'

(Please print this page and only cut the key cards in the box below and pass to Thai people as you come to the temple)

- 1) Hand this card to a taxi driver, to let him know that you would like to go to the 'Victory Monument'.

<p>ไปอนุสาวรีย์ชัยฯ (Go to the Victory Monument)</p>
--

- 2) <1 person> Hand this card at a van ticket booth (ticket booth number 69), to let them know that you would like to get off at 'Yak Tarlay Bouk'.

<p>ลงแยกทะเลบก (Get off at 'Yak Tarlay Bouk')</p>

<Group of 2 people or more> Hand this card at a van ticket booth to let them know that you would like to get off at 'Wat Trivisudhidham'.

<p>เข้าไปในวัดตรีวิสุทธิธรรม จำนวน _ คน (Write the number of passengers in the space above) (Get off at 'Wat Trivisudhidham' / for _ people)</p>
--

- 3) <1 person> Hand this card to a van driver, to let him know that you would like to get off at 'Yak Tarlay Bouk'.



- 4) <1 person> Hand this card to people who would drop you off at the temple.



How to travel back to the Victory Monument by public van

<1 person>

Please ask Thai people to call 'Khun Oorn/ คุณอ้วน' (Tel: 0822902788) to drop you off at 'Yak Tarlay Bouk/ แยกทะเลบก'. The cost of the bike ride is 40 Baht.

Once you get off, you should see a small green shelter and a small local petrol station (see Figure 1). Take the van number 69 on the opposite side of the road (In front of the local hospital (see Figure 1)). The fare is 160 Baht.

Note: Don't take the van with the red diamond image in front of it as it will not drop you off at the Victory Monument (see Figure 2).



Figure 1: Small green shelter and a small local petrol station (left image), and a local hospital (right image)



Figure 2: The van with the red diamond image in front of it.

Reaching the Victory Monument (see Figure 3).



Figure 3: Victory Monument

<Group of 2 people or more>

Please ask Thai people to call the van for you (Tel: 0885437201 or 0885437202).

- 1) Tell the van driver to pick you up at Wat Trivisudhidham and drop you off at the Victory Monument.
- 2) Tell the number of passengers.
- 3) Note the code number of the van.

After the call, you have to be ready at the 'Mother Earth Squeezing Her Hair image' (see Figure 1).



Figure 1: The Mother Earth Squeezing Her Hair image

The van number 69 will pick you up at the Mother Earth Squeezing Her Hair image. Be sure to take the van with the correct code number (see Figure 2). The fare is 200 Baht/ person.



Figure 2: Code number of the van

Reaching the Victory Monument (see Figure 3).



Figure 3: Victory Monument

Summary of the journey

Duration: 2:30 - 3 hours from Wat Trivisudhidham

Cost : 200 Baht

Van frequency: Every 30 minutes (The last van is around 6:30 p.m.)

Note: Avoid traveling back to the Victory Monument on Sunday late afternoon and evening (4:00 p.m. - 6:30 p.m.) as the van is usually full.